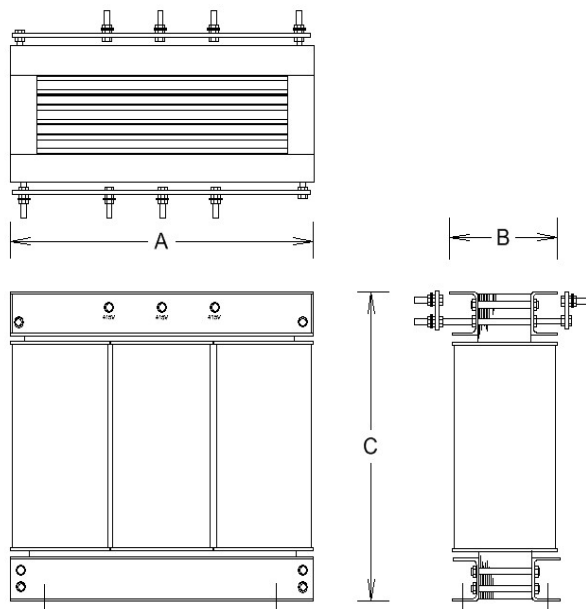


Three Phase Transformers

160 – 750kVA

3CL Range Data Sheet

| | |
|-------------------------------|--|
| Three Phase Power Transformer | Isolation Transformer with Earth Screen between Primary and Secondary |
| Standard | IEC / BS-EN 61558, IEC60076 |
| Primary Voltages | TBA |
| Secondary Voltages | TBA |
| Frequency | 50/60Hz |
| Insulation Class | F |
| Insulation Resistance | > 5 Meg Ω |
| Dielectric Strength | Primary to Secondary. > 2.5kV Primary to Earth > 2.5kV Secondary to Earth > 2.5kV |
| Ambient Temperature | 40° C |
| Duty | Continuous duty at the rated kVA |
| Core | High Grade Electrical Steel, Securely clamped and tied |
| Windings | Grade 2 Polyester covered Copper round wire or Nomex covered Copper Strip |
| Cooling | Open Transformers - AN Enclosed - ANAN Fan Cooling can also be provided on special units |
| Terminals | Din Rail mounted, Stud or Copper Bus bar according to the current level. |
| Earthing | Earth Screen between Primary and Secondary Windings with cable brought out and bonded to the Core and all Steel Metalwork. |
| Enclosures | Sheet Steel Enclosures can be provided, please see our separate Data Sheets. |
| Protection | Fuses or Circuit breakers can be fitted |
| Vector Group | TBA |



| VA | A | B | C | Weight Kg |
|--------|------|-----|------|-----------|
| 160kVA | 840 | 440 | 840 | 670 |
| 200kVA | 840 | 450 | 840 | 750 |
| 250kVA | 840 | 470 | 840 | 900 |
| 300kVA | 1080 | 450 | 1000 | 1250 |
| 400kVA | 1080 | 500 | 1000 | 1400 |
| 500kVA | 1080 | 550 | 1000 | 1700 |
| 750kVA | 1200 | 500 | 1200 | 2000 |